



**Meccanotecnica  
Umbra**

a Story of Excellence



**Industrial Applications**  
complete  
products range#05

## Europa

**Characteristics:**

Single Mechanical Seal  
Single Directional  
Unbalanced

**Limit of applications:**

Pressure  $p = 12$  bar  
Speed  $v = 15$  m/s  
Temperature  $t = -30 +200^{\circ}\text{C}$   
Available: Europa1 with according DIN 24960

## Simplex

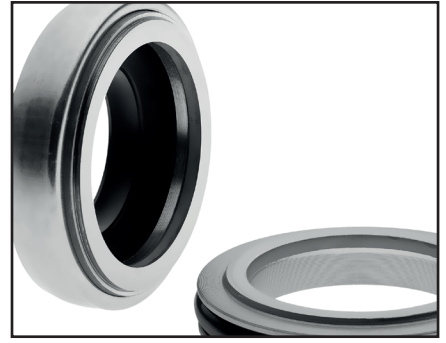
**Characteristics:**

Single Mechanical Seal  
Single Directional  
Unbalanced

**Limit of applications:**

Pressure  $p = 10$  bar  
Speed  $v = 20$  m/s  
Temperature  $t = -30 +200^{\circ}\text{C}$

## FA

**Characteristics:**

Single Mechanical Seal  
Rubber Bellows seal  
Double Directional  
Unbalanced

**Limit of applications:**

Pressure  $p = 6$  bar  
Speed  $v = 12$  m/s  
Temperature  $t = -30 +200^{\circ}\text{C}$

## FG

**Characteristics:**

Single Mechanical Seal  
Rubber Bellows seal  
Double Directional  
Unbalanced

**Limit of applications:**

Pressure  $p = 12$  bar  
Speed  $v = 10$  m/s  
Temperature  $t = -30 +200^{\circ}\text{C}$

**Available:** FG1-FG2-FG3 (metric/inch)  
with stationary seats type LE-OL/CC

## FP/D

**Characteristics:**

Single Mechanical Seal  
Rubber Bellows seal  
Double Directional  
Unbalanced - According to DIN 24960

**Limit of applications:**

Pressure  $p = 12$  bar  
Speed  $v = 15$  m/s  
Temperature  $t = -30 +200^{\circ}\text{C}$

**Available:** FP/S-FP/T3S

## DRM1-S

**Characteristics:**

Single Mechanical Seal (conical spring)  
Single Directional  
Unbalanced

**Limit of applications:**

Pressure  $p = 12$  bar  
Speed  $v = 15$  m/s  
Temperature  $t = -20 +200^{\circ}\text{C}$

**Available:** DRM1-HS / Balaced  
Vacuum to 25 bar

## DR1-S

**Characteristics:**

Single seal multiple springs  
Double Directional  
Unbalanced

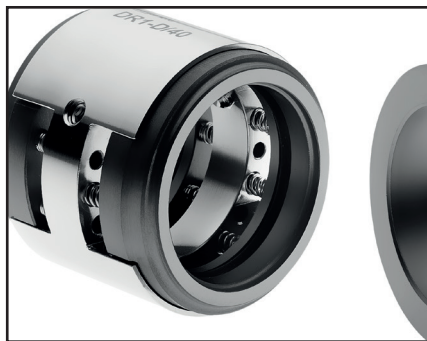
According to DIN 24960

**Limit of applications:**

Pressure  $p = 16$  bar  
Speed  $v = 20$  m/s  
Temperature  $t = -20 +200^{\circ}\text{C}$

**Available:** DR1-HS / Balaced - Vacuum to 40 bar  
with stationary seats type OL/CC or CL

## DR1-D

**Characteristics:**

Double seal multiple springs  
Double Directional  
Unbalanced

According DIN 24960

**Limit of applications:**

Pressure  $p = 16$  bar  
Speed  $v = 20$  m/s  
Temperature  $t = -20 +200^{\circ}\text{C}$

**Available:** DR1-HD / Balaced - Vacuum to 40 bar

## DR2-S

**Characteristics:**

Single seal multiple springs  
Double Directional  
Balaced

According to DIN 24960

**Limit of applications:**

Pressure  $p = 25$  bar  
Speed  $v = 20$  m/s  
Temperature  $t = -20 +200^{\circ}\text{C}$

**Available:** stationary seats type OL/CC or CL

# DRB-S

by Flex-A-Seal



**Characteristics:**  
 Single Mechanical Seal  
 Metal Bellows  
 Double Directional  
 According to DIN 24960

**Limit of applications:**  
 Pressure  $p = 16$  bar  
 Speed  $v = 3600$  rpm  
 Temperature  $t = -50 + 400^{\circ}\text{C}$

# DPS

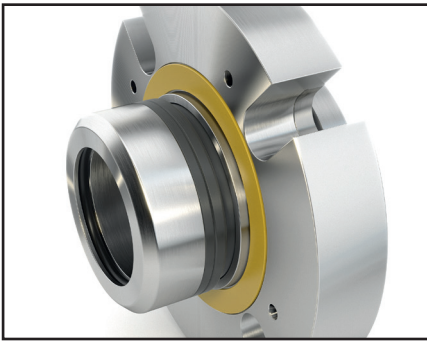


**Characteristics:**  
 Single seal single or multiple springs  
 Double Directional  
 Balanced

**Limit of applications:**  
 Pressure  $p = 12$  bar  
 Speed  $v = 15$  m/s  
 Temperature  $t = -35 + 180^{\circ}\text{C}$   
**Available:** version with stationary to  
 According to DIN 24960

# ES

PRODUCT OF HUHNSAL

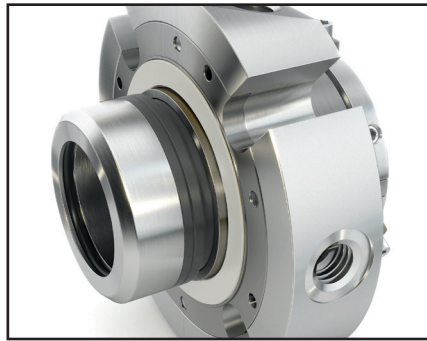


**Characteristics:**  
 Single Cartridge Seal  
 Double Directional  
 Balanced

**Limit of applications:**  
 Pressure  $p = 25$  bar  
 Speed  $v = 3600$  rpm  
 Temperature  $t = -30 + 250^{\circ}\text{C}$

# ED

PRODUCT OF HUHNSAL

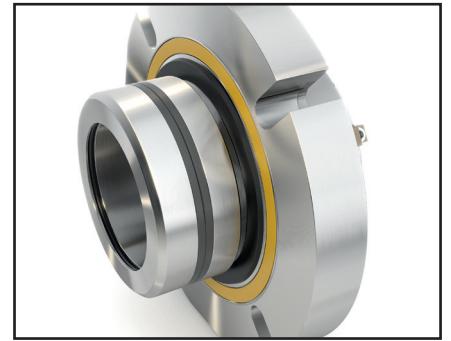


**Characteristics:**  
 Double Cartridge Seal  
 Double Directional  
 Balanced

**Limit of applications:**  
 Pressure  $p = 25$  bar  
 Speed  $v = 3600$  rpm  
 Temperature  $t = -30 + 250^{\circ}\text{C}$

# BFS

PRODUCT OF HUHNSAL



**Characteristics:**  
 Zero-Flush Cartridge seal designed for slurry applications.

**Limit of applications:**  
 Pressure Up to 25 bar  
 Speed Up to 18 m/s  
 Temperature Up to 80 °C without quench  
 Slurry with up to 60% solid contents by weight

PRODUCT OF Fugesco



**Radial  
 Turbine  
 Seal**

PRODUCT OF Fugesco



**Axial  
 Turbine  
 Seal**





# Meccanotecnica Umbra

a Story of Excellence

## Italy

### Headquarters

Via G. Agnelli, 7  
06042 Campello sul Clitunno (PG) ITALY  
Phone +39 0743 279.1  
www.meccanotecnicaumbra.com  
italy@mtu-group.com

## India

Plot # C 23 & C 24, SIPCOT  
Industrial Complex, Nilakottai Taluk,  
Pallapatti Village 624 201,  
Dindigul District,  
Tamilnadu, India.  
www.meccanotecnica.in  
india@mtu-group.com

## Brazil

R. João Maria Goes, 399  
83060-206 São José dos Pinhais  
PR- Brasil  
Telefone +55 41 3381-2600  
Fax. +55 41 3382-3523  
www.mecanotecnica.com.br  
brasil@mtu-group.com

## China

North of No 8 road ,jiao zhou wan  
industrial park, Jiao zhou,  
Qing dao, PRC  
Phone +86 532 8729 3888 Ext 1007  
Fax +86 532 8729 3118  
www.meccanotecnica.cn.com  
china@mtu-group.com

## USA

Sales Office  
41650 Gardenbrook Road,  
Suite # 110  
Novi, MI 48375  
Tel.: 248-347-0606 ext. 224  
www.meccanotecnica.us.com  
usa@mtu-group.com

## Turkey

İkiteli Organize Sanayi Bölgesi Eskoop  
Sanayi Sitesi C-6 Blok No:292-294  
Başakşehir / İSTANBUL  
Phone: +90 212 671 82 49  
+90 212 671 82 50  
www.meccanotecnica.com.tr  
mtu.tr@mtu-group.com

## Sweden

### Huhnseal AB

Box 288 Jarvgatan 1- 261 23  
Landskrona  
Tel: +46 418 44 99 40  
Fax: +46 418 44 99 69  
www.huhnseal.com  
sales@huhnseal.com

## Canada

### Fugesco inc.

80 Avenue Leacock  
Pointe-Claire, Quebec  
H9R 1H1 Canada  
Tel.: (514) 631 3246  
Fax: (514) 631 2566  
sales@fugesco.com

Join us:

